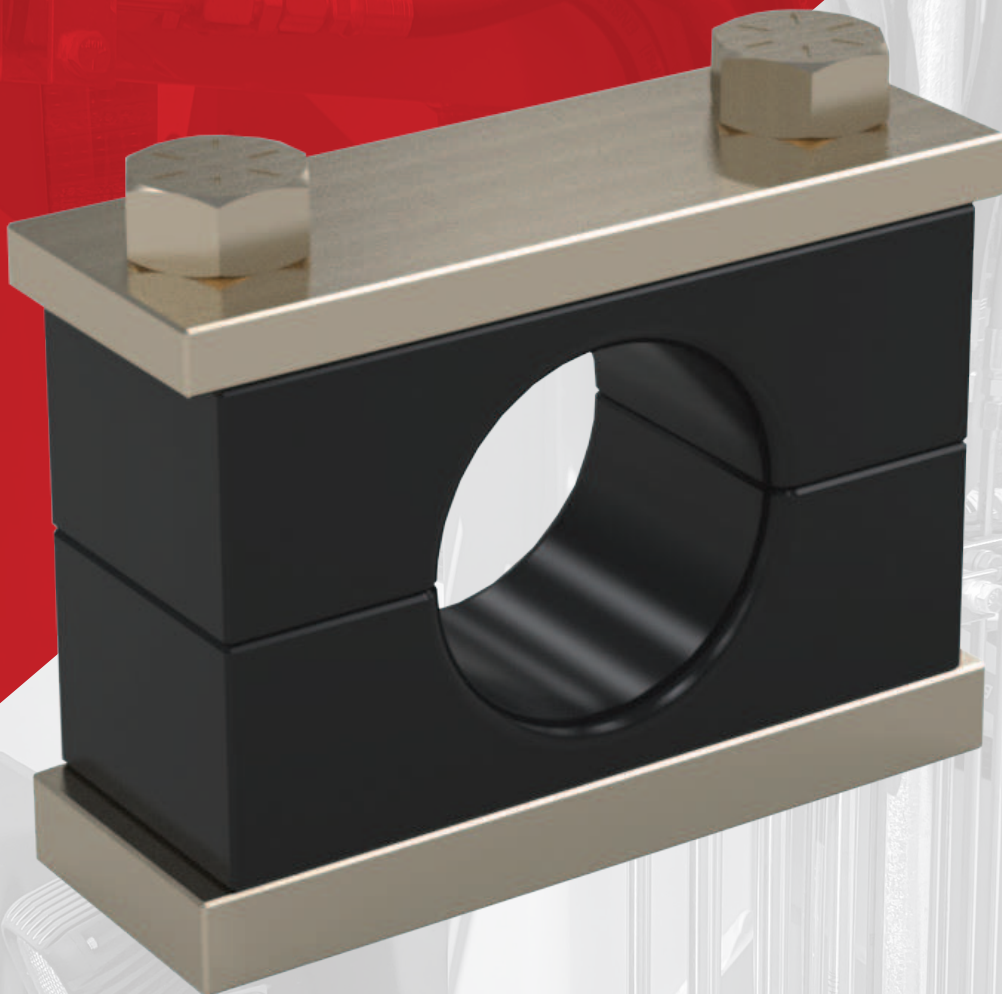




100 SERIES – SINGLE CLAMPS



100 Series – Single Clamps

Single, Double and Stacked Assemblies for Every Size and Application

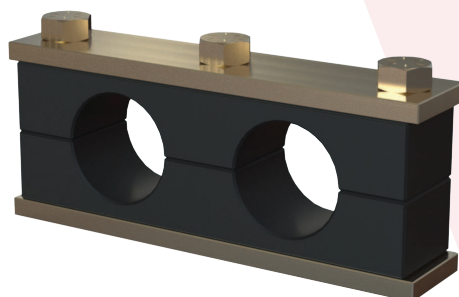
- Designed for tubes, pipes and hoses ranging from .250" to 2.625"
- Weld and channel mount options
- All sizes in stock
- Made in USA

Our team of experts can help you design the perfect clamp for your application. Contact us today for a free quote.

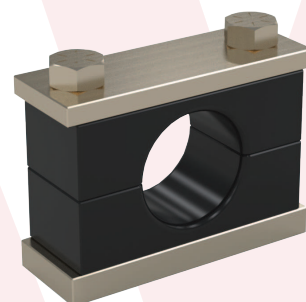
info@vermatic.com
800-922-6461



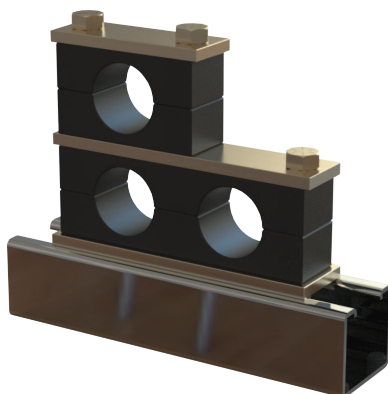
105-SB-1-1
STACKED



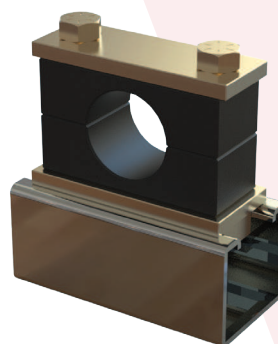
107-SB-2
DOUBLE CUSHION



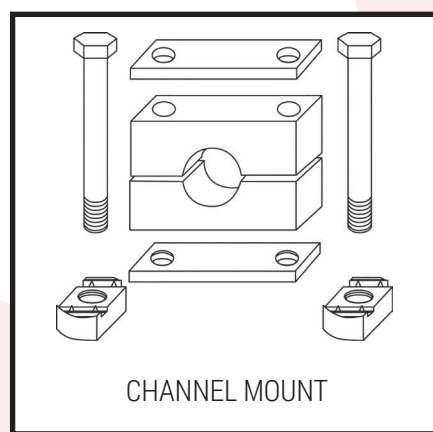
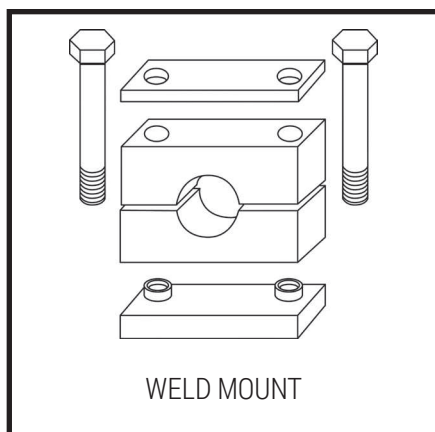
115-SB-1
WELD MOUNT



103-SBX-2-1
STACKED, DOUBLE & SINGLE



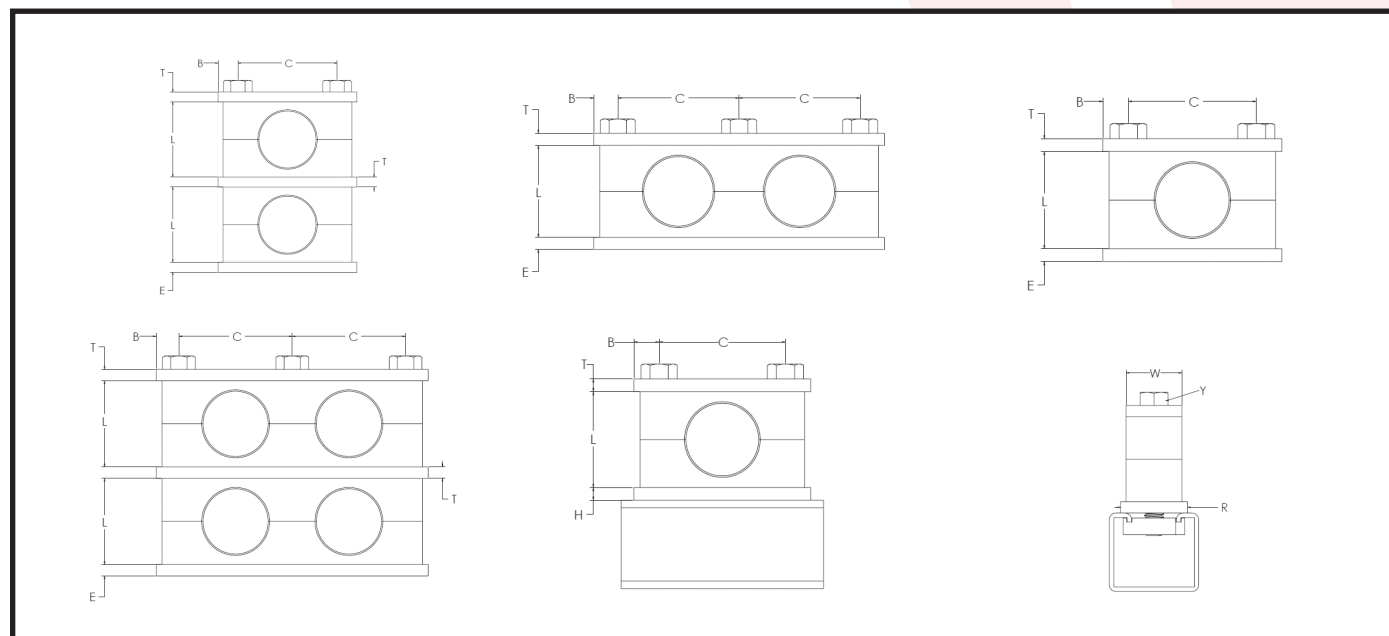
105-C-1
CHANNEL MOUNT



Dimensions in Inches

SERIES	E	T	C	H	R	L	B	W	Y
103	.312	.187	1.250	.125	1.250	1.000	.375	1.000	5/16 - 18
105	.312	.187	1.500	.125	1.250	1.562	.375	1.000	5/16 - 18
107	.312	.187	2.000	.125	1.250	1.850	.375	1.000	5/16 - 18
115	.375	.250	2.500	.250	1.250	2.125	.500	1.250	7/16 - 14
120	.375	.250	3.000	.250	1.250	2.625	.500	1.250	7/16 - 14
125	.375	.250	3.500	.250	1.250	3.125	.500	1.250	7/16 - 14

Engineering Data



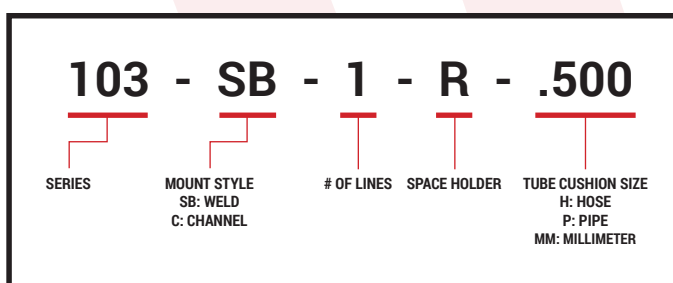
Cushion Sizes

Bolt Ref.	Series	TUBE O.D.	PIPE SIZE	HOSE O.D.	METRIC SIZE	DOUBLE CUSHION			
5/16	103	.250	1/8P (.405)	.500H	8MM	.250	1/8P (.405)	.500H	8MM
		.375	1/4P (.540)	.562H	10MM	.357	1/4P (.540)	.562H	10MM
		.500	3/8P (.675)	.625H	12MM	.500	3/8P (.675)	.625H	12MM
		.625		.687H	14MM	.625		.687H	14MM
		.750		.750H	15MM	.750		.750H	15MM
					16MM				16MM
					18MM				18MM
					20MM				20MM
5/16	105	.250	1/2P (.840)	.750H	12MM	.250	1/2P (.840)	.750H	12MM
		.375	3/4P (1.050)	.812H	15MM	.375	3/4P (1.050)	.812H	15MM
		.500		.875H	16MM	.500		.875H	16MM
		.625		.937H	18MM	.625		.937H	18MM
		.750		1.000H	22MM	.750		1.000H	22MM
		.875			25MM	.875			25MM
		1.000				1.000			
5/16	107	.750	1/2P (.840)	1.062H	25MM	.750	1/2P (.840)	1.062H	25MM
		.875	3/4P (1.050)	1.125H	30MM	.875	3/4P (1.050)	1.125H	30MM
		1.000	1P (1.315)	1.187H		1.000	1P (1.315)	1.187H	
		1.250		1.250H		1.250		1.250H	
		1.500		1.312H		1.500		1.312H	
				1.375H				1.375H	
				1.437H				1.437H	
				1.500H				1.500H	
7/16	115	.750	1/2P (.840)	1.062H	28MM				
		.875	3/4P (1.050)	1.125H	35MM				
		1.000	1P (1.315)	1.187H					
		1.250	1 1/4P (1.660)	1.250H					
		1.500		1.312H					
				1.375H					
				1.437H					
				1.500H					
7/16	120	1.000	3/4P (1.050)	1.562H	42MM				
		1.250	1P (1.315)	1.625H					
		1.500	1 1/4P (1.660)	1.687H					
		1.750	1 1/2P (1.900)	1.750H					
		2.000	2P (2.375)	1.812H					
		2.250		1.875H					
				1.937H					
				2.000H					
7/16	125	1.500	3/4P (1.050)	2.062H					
		1.750	1P (1.315)	2.125H					
		2.000	1 1/4P (1.660)	2.187H					
		2.250	1 1/2P (1.900)	2.250H					
		2.500	2P (2.375)	2.312H					
			2 1/2P (2.875)	2.375H					
				2.437H					
				2.500H					

Key Features

- Designed for tubes, pipes and hoses ranging from .250" to 2.625"
- Stackable
- Design includes button-fastener bottom plate and closed-end cushion
- One- and two-line applications
- Weld and channel mount installations
- Can be delivered assembled or unassembled and bagged
- Steel hardware; aluminum or stainless steel also available
- Cushion material: polypropylene
- Black oxide, clear or yellow zinc finishes available
- Hose cushion edge features soft radius

How to build your part number:



Industries and Equipment

- Agriculture Equipment
- Backhoes
- Balers, Sheers, Crushers
- Cranes
- Flare and Vent Stacks
- Forklifts
- Hydraulic Power Units
- Material Handling Equipment
- Off-Highway Equipment
- Oil and Gas
- Refuse Haulers
- Railroad Maintenance Equipment
- Steel Mills
- Skid Steer Loaders
- Tractor Mowers
- Tree Harvesting Machines
- Trenchers

Vermatic – The Clamp Experts



35
YEARS

More than 35 years
of clamp manufacturing
expertise



Standard and
custom clamps to fit
your unique design



Samples produced in
a day and orders shipped
in less than a week



Made
in USA

Need help finding the right clamp to fit your design? Let's talk.
info@vermatic.com • 800-922-6461

